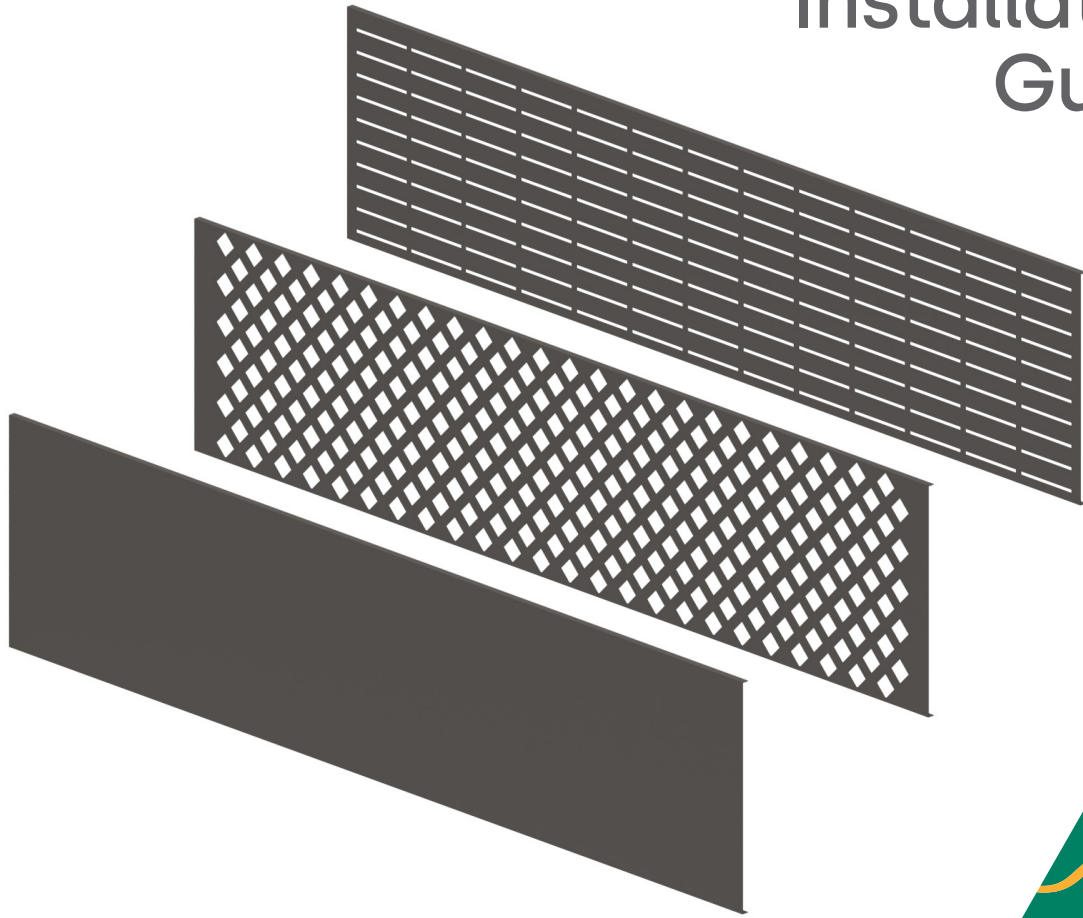




# Screenline

DIY Screen Solutions

## Installation Guide



## Screenline Feature Fencing



# Screenline

## DIY Screen Solutions

**Screenline Feature Fencing is a DIY solution to your privacy and partitioning needs.**

Our feature fencing is 100% Australian made and can be easily installed to create a solid or perforated barrier to screen off any area large or small. A simple, stylish, practical, durable solution that is custom powder coated to suit your existing colour scheme.

Order today for prompt delivery Australia wide.

### Features

- DIY kit
- Large selection of powdercoated Colorbond® colours
- 100% Australian made
- Low maintenance
- Easy partitioning

Screenline

# Kit Inclusions

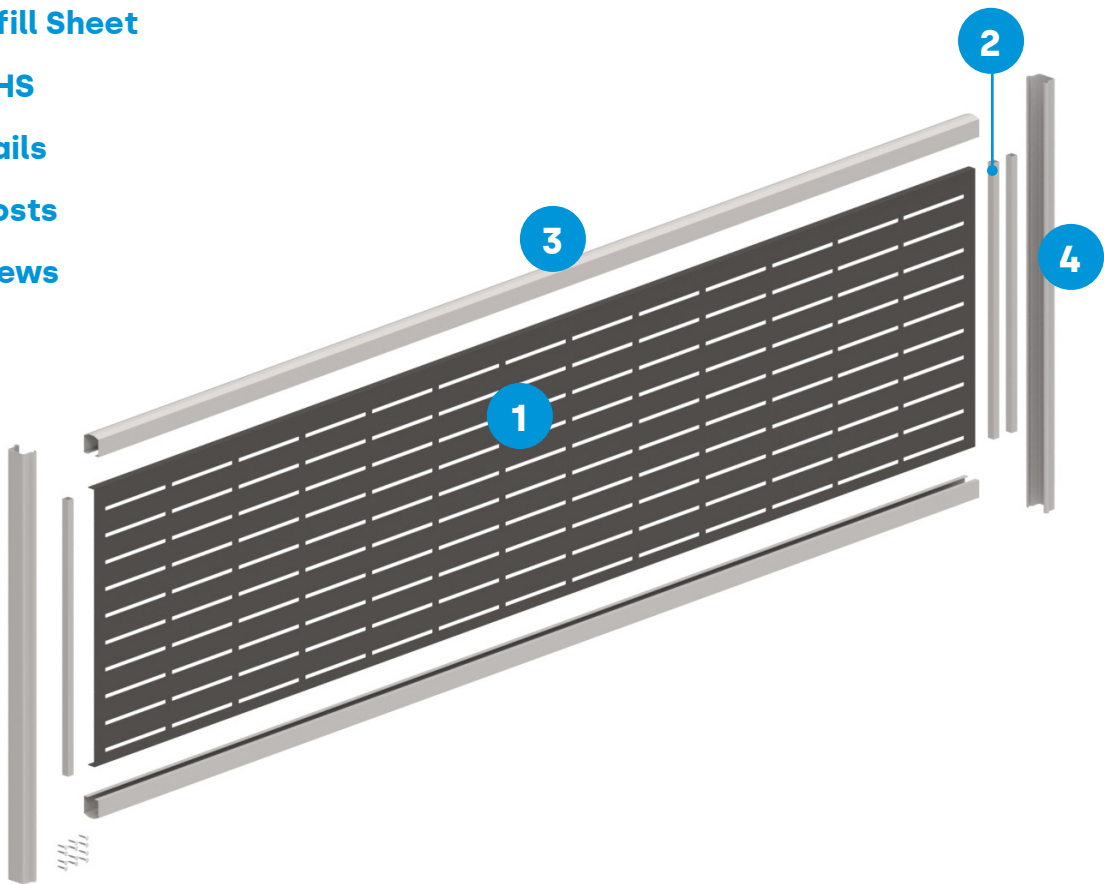
1 1x Infill Sheet

2 3x RHS

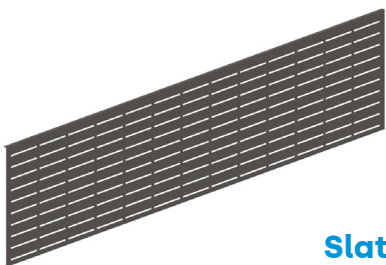
3 2x Rails

4 2x Posts

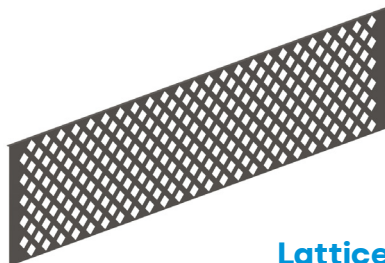
Tek Screws



# Options



Slat



Lattice



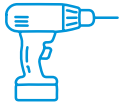
Privacy

**Panels available in the following sizes:**

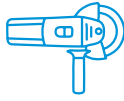
Heights: 550mm / 900mm / 1170mm

Widths: 2350mm / 3050mm

# Tools



Cordless Drill  
& Hex Head  
Driver Bit



Angle  
Grinder



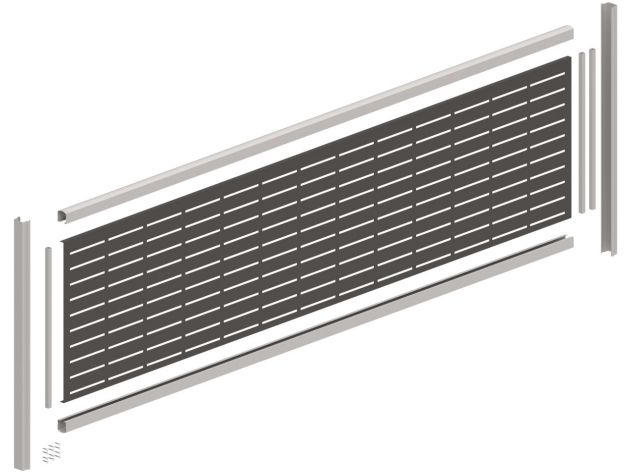
Tape Measure



Tin Snips

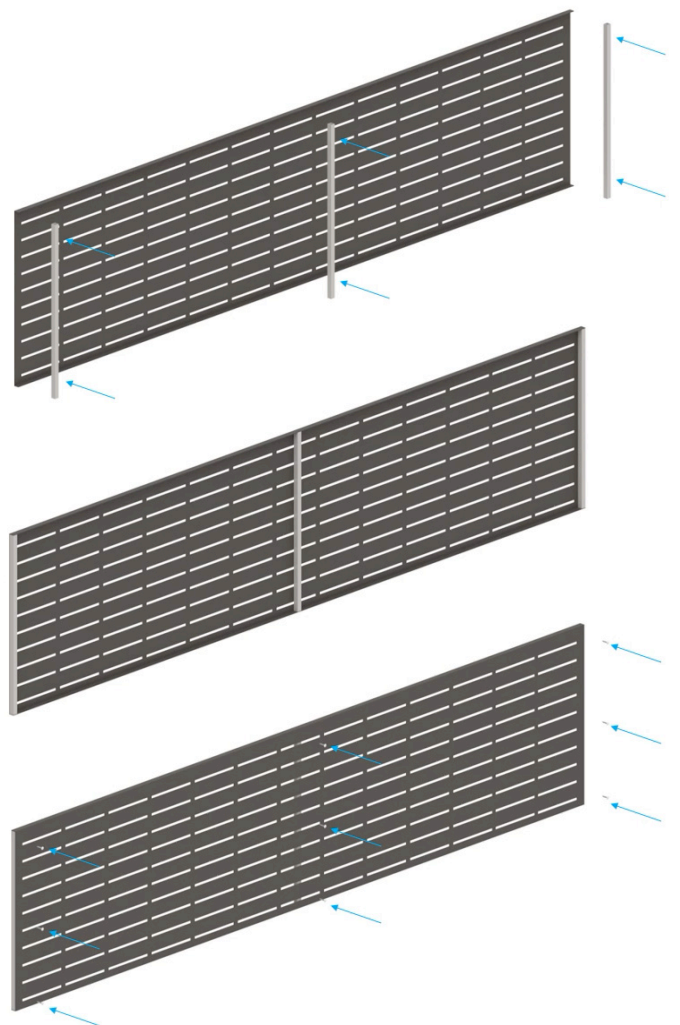
## Step 1

Cut all components to required lengths and layout as shown.



## Step 2

Screw RHS onto the ends and centre of lattice sheet.

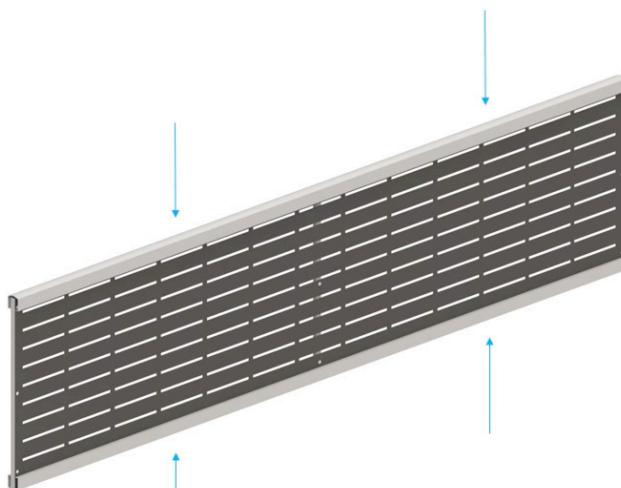


Step 1 to 2



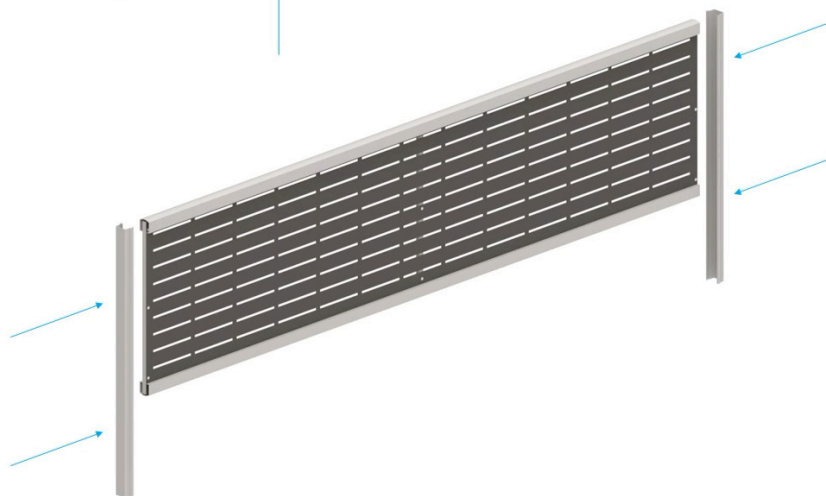
## Step 3

Fit the rail over the bent edges of the lattice sheet. When fitted, the rails should grip the gate strips firmly.



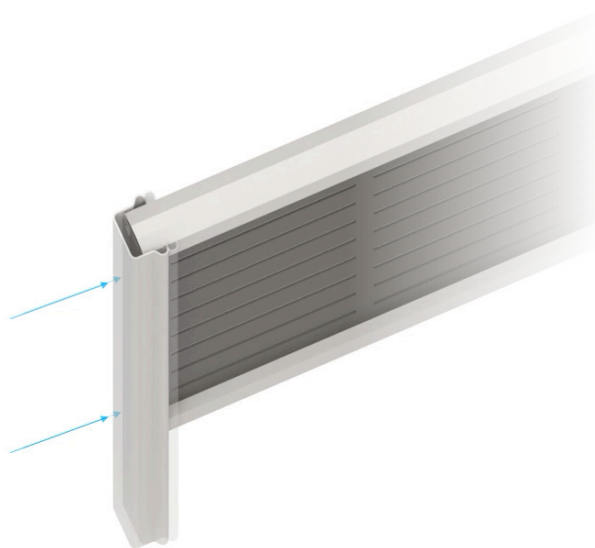
## Step 4

Fit the posts over the rails at each end.



## Step 5

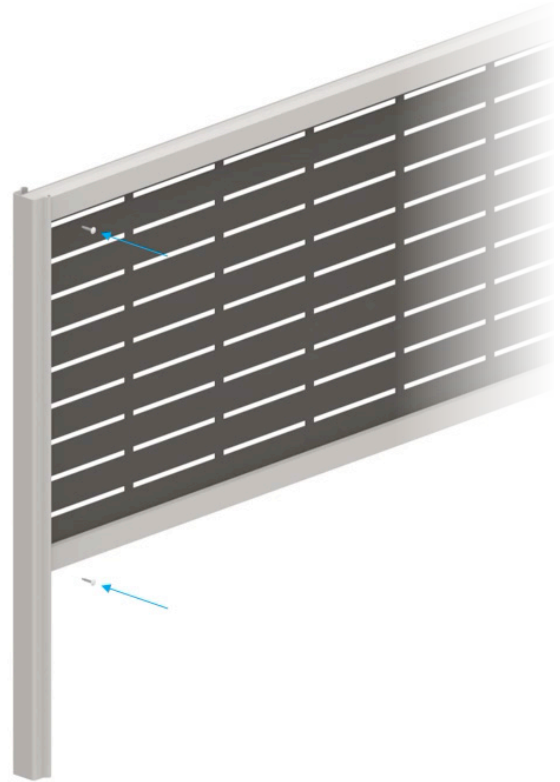
Tap until firmly seated against the RHS.



Step 3 to 5

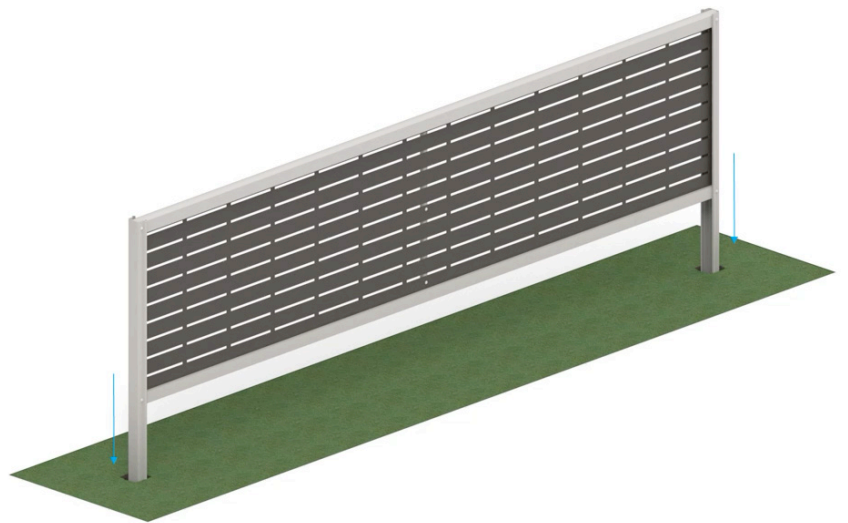
## Step 6

Screw posts to rails using tek screws.



## Step 7

Stand panel up and place holes or bolt to concrete.



Step 6 to /  
Step 9



# Installation Examples





# Disclaimer

The material within this booklet is made available for general use and information purposes only. Users should use their own skill and care with respect to the use of material. It is not provided as professional advice. Users should obtain appropriate professional advice relevant to their particular circumstances to evaluate its accuracy, currency, completeness and relevance for their purposes and specific site restraints and topography. No person should place reliance on information from the information booklet. It is the user's sole responsibility to comply with all statutory requirements and make appropriate decisions in relation to such compliance. Whilst every effort has been taken to ensure the accuracy and currency of all information within the information booklet, it is not verified information and the accuracy and currency of the information cannot be guaranteed. The provider of this booklet does not warrant that the information within this information booklet can be relied on and expressly disclaims all warranties, express or implied, and does not warrant or make any representations regarding the use of any information within the information booklet. In some cases the material may incorporate or summarise views, guidelines or recommendations of third parties. The information being general in nature is unable to take into account specific site conditions or additional controls that may apply to a particular site. Note that laws and regulations may vary depending on states and territories and it is your responsibility to check and comply with such law and regulations.